



# INSTRUCTION BULLETIN

No. 9045218  
Machine: S16  
Published: 12-2021  
Rev. 00

**NOTE: DO NOT DISCARD the Parts List from the Instruction Bulletin. Place the Parts List in the appropriate place in the machine manual for future reference. Retaining the Parts List will make it easier to reorder individual parts and will save the cost of ordering an entire kit.**

*NOTE: Numbers in parenthesis ( ) are reference numbers for parts listed in Bill of Materials.*

Installation instructions for **kit number 9045202**

Kit installation must be performed by TennantTrue<sup>®</sup> service or an authorized service provider.

## SYNOPSIS:

This kit contains the parts needed to install a deluxe seat on S16 sweepers.  
Please follow step-by-step instructions.

## SPECIAL TOOLS / CONSIDERATIONS: NONE

(Estimated time to complete: 1 hour)



### PROTECT THE ENVIRONMENT

Please dispose of packaging materials, used machine components such as batteries and fluids in an environmentally safe way according to local waste disposal regulations.

Always remember to recycle.

## PREPARATION:

**FOR SAFETY: Before leaving or servicing machine, stop on level surface, turn off machine, and remove key.**

1. Lift the operator seat open and secure the seat into the fully open position.
2. Disconnect the battery cable from the machine.

**WARNING:** Always disconnect battery cables from machine before working on electrical components.

3. Disconnect the wire harness from the seat switch. (Fig. 1)

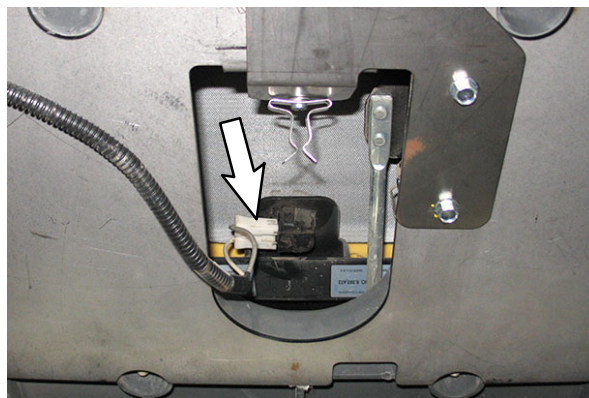
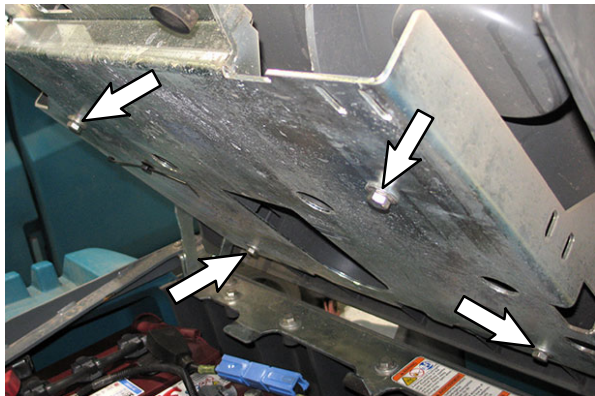


FIG. 1

4. Remove the hardware securing the upper operator platform to the seat channel and carefully lift the upper operator platform/operator seat from the seat channel. Set all mounting hardware aside. (Fig. 2)

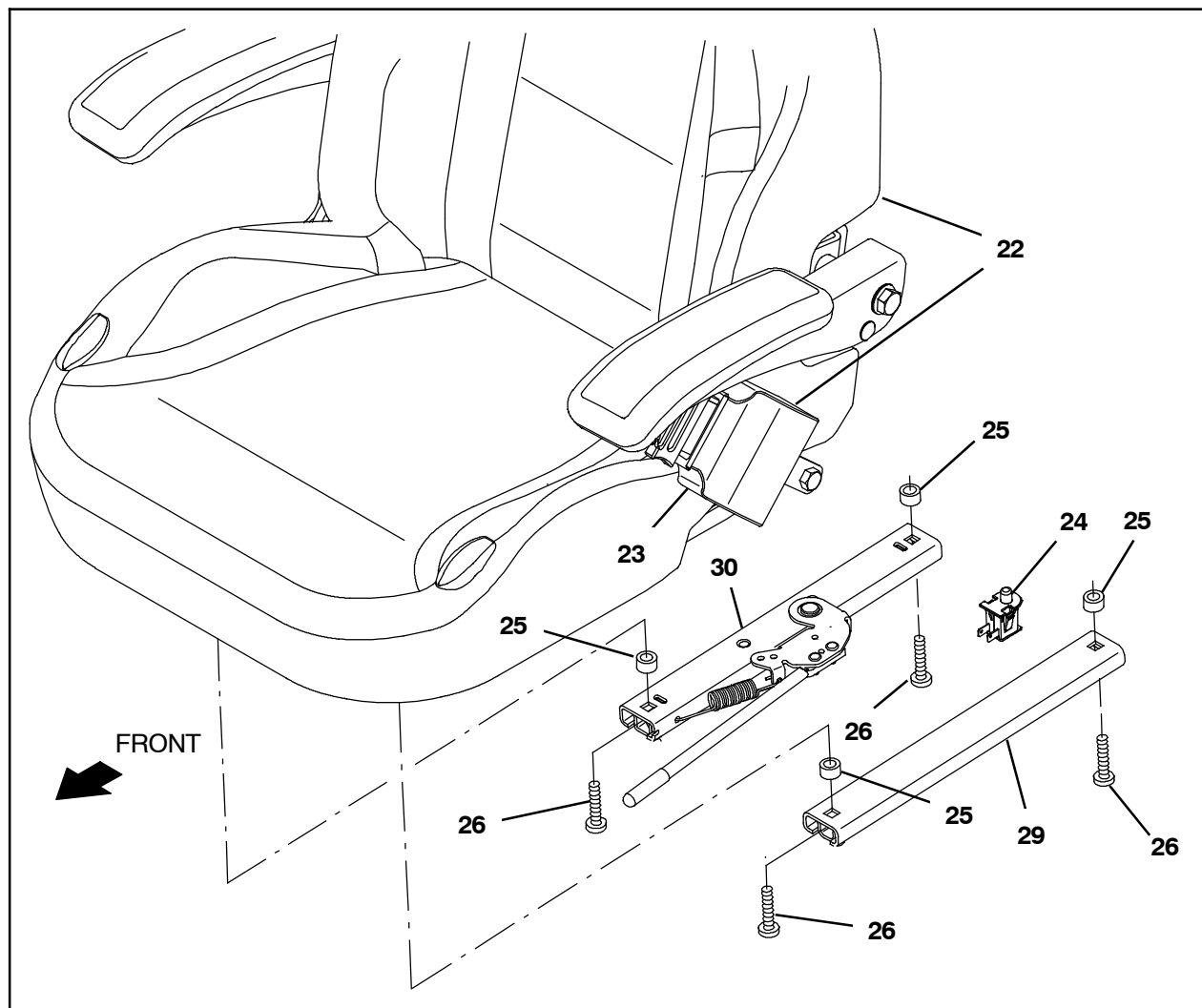


**FIG. 2**

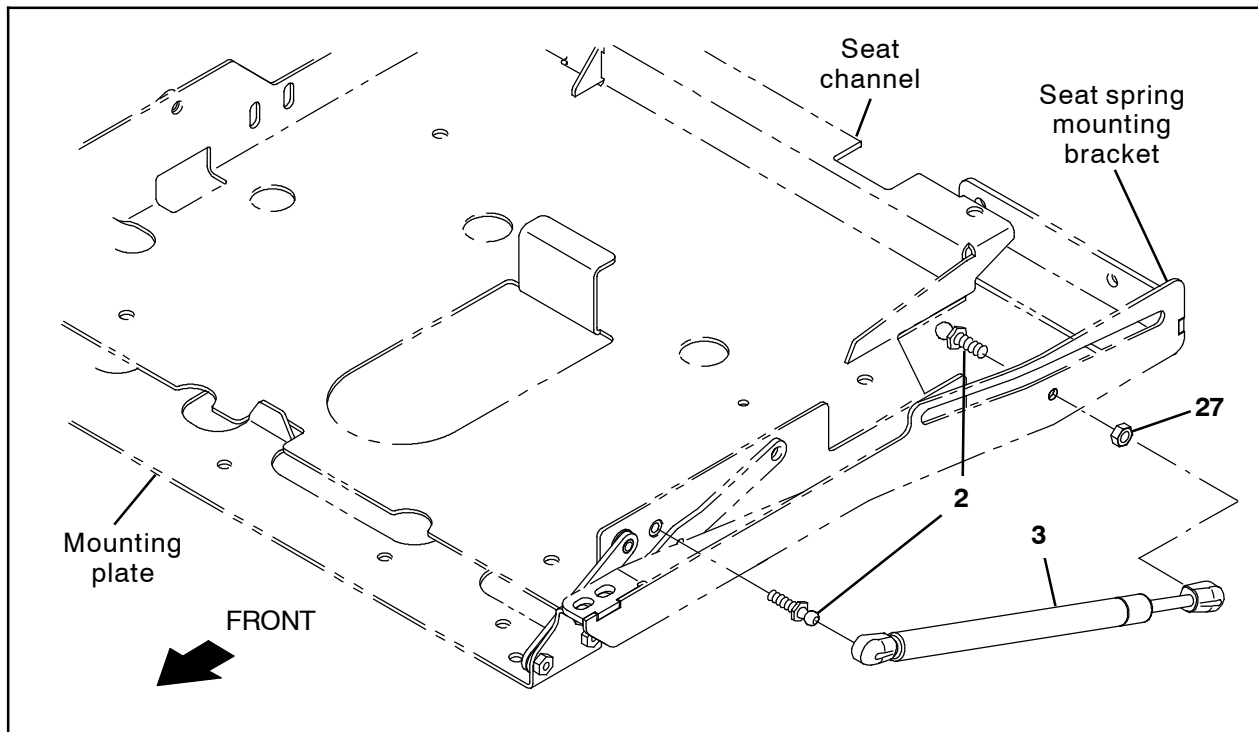
5. Remove the operator seat from the upper operator platform. Set the upper operator platform aside. Discard the operator seat and all mounting hardware.

#### **INSTALLATION:**

1. Install the seat switch (24) into the operator seat (22). (Fig. 3)
2. Use two pan screws (26) and two spacers (25) to install the adjustable slide track (30) onto the operator seat (22). (Fig. 3)
3. Use two pan screws (26) and two spacers (25) to install the slide track (29) onto the operator seat (22). (Fig. 3)

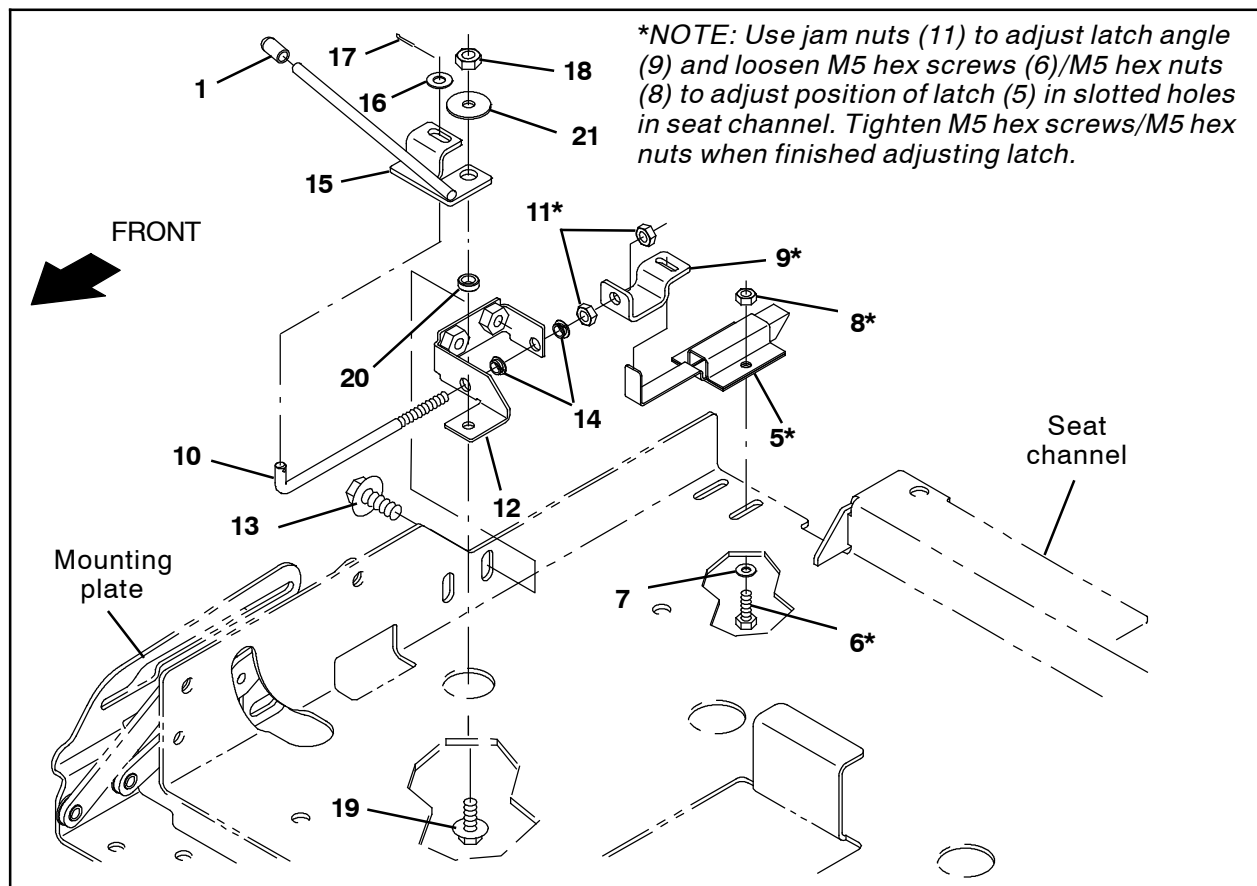


**FIG. 3**



**FIG. 4**

4. Use one ball stud (2) to install the gas spring (3) onto the seat channel. (Fig. 4)
5. Use another ball stud (2) and hex nut (27) to install the gas spring (3) onto the seat spring mounting bracket. (Fig. 4)



**FIG. 5**

6. Use two M5 hex screws (6), two flat washers (7), and two M5 hex nuts (8) to install the latch (5) onto the seat channel. (Fig. 5)
7. Install the yellow handle grip (1) onto the seat latch handle (15). (Fig. 5)
8. Press both nylon snap in bushings (14) into the latch bracket (12). (Fig. 5)
9. Insert the latch handle (10) through the nylon snap in bushings (14) pressed into the latch bracket (12) in the previous step. (Fig. 5)
10. Thread one hex jam nut (11) onto the latch handle (10). (Fig. 5)
11. Insert the latch angle (9) onto the latch handle (10) and thread the remaining hex jam nut (11) onto the latch handle to secure the latch angle. (Fig. 5)
12. Orient the notch in the seat latch handle (15) onto the latch handle (10) and use one SEMS M6 hex screw (1), one sleeve (20), one flat washer (21), and one M6 hex nut to install the seat latch handle (15) onto the latch bracket (12). (Fig. 5)
13. Use one cotter pin (17) and one flat washer (16) to secure the latch handle (10) inside the seat latch handle (15). (Fig. 5)
14. Install the latch angle (9) onto the latch (5) and use two SEMS M8 hex screws (13) to install the seat latch assembly assembled in the previous steps onto the seat channel. (Fig. 5)
15. Close the seat channel onto the machine and adjust hardware so the latch (5) secures the seat channel closed and allows the seat channel to be opened/raised when the handle is pulled to release the seat channel. (Fig. 5)
16. Use four hex nuts (27), four flat washers (28), and four bolt retention nuts (4) to install the operator seat (22) onto the upper operator platform. (Fig. 6)
17. Use saved hardware to install the operator platform/operator seat (22) onto the seat channel. (Fig. 6)
18. Connect the wire harness to the seat switch (29). (Fig. 6)
19. Reconnect the battery cable to the machine.

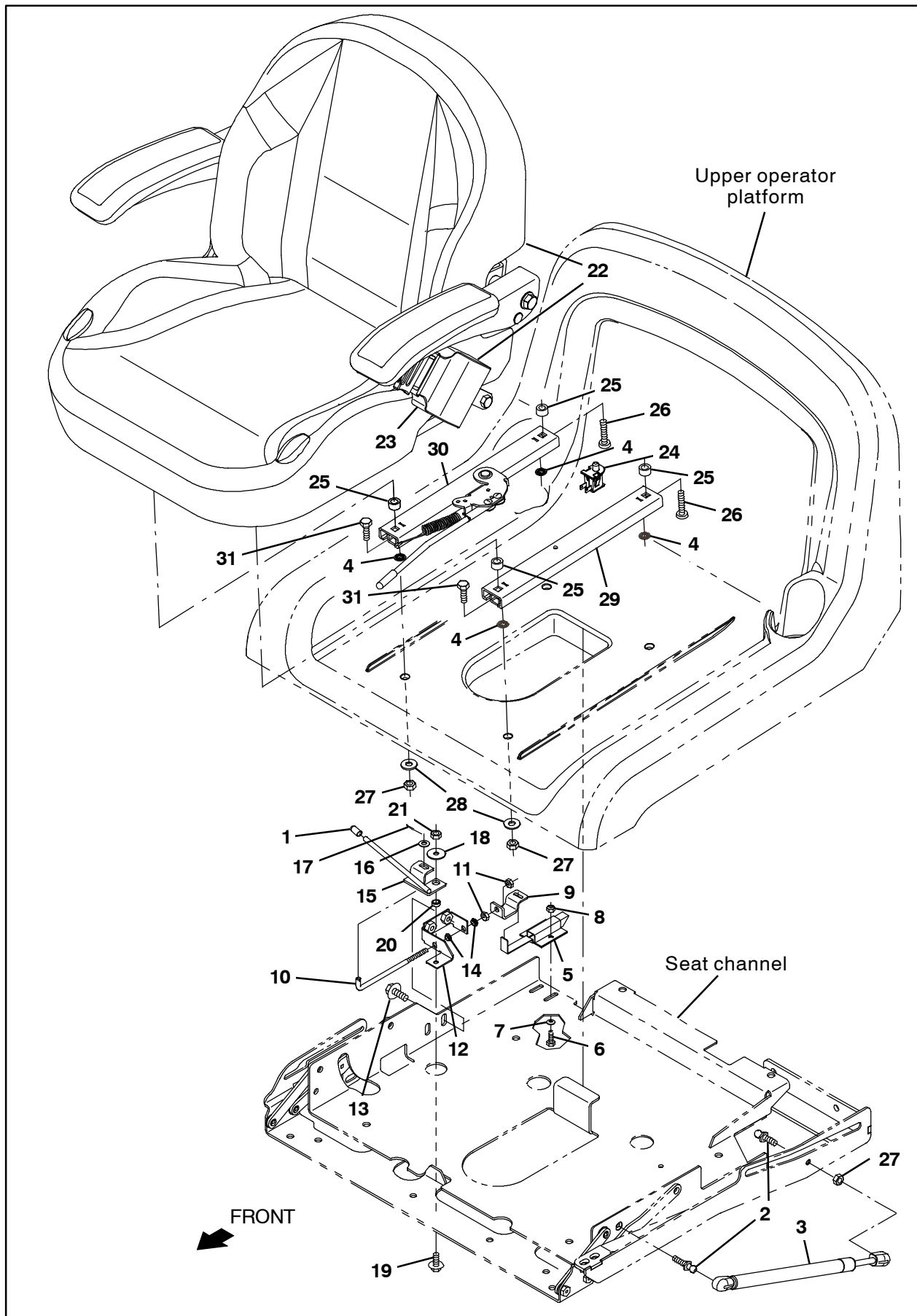


FIG. 6

**Bill Of Materials For Seat Kit, Deluxe, CI [S16] - 9045202**

<b>Ref.</b>	<b>Tennant Part No.</b>	<b>Description</b>	<b>Qty.</b>
1	1202957	Grip, Handle, .25d .60l Yel	1
2	1012878	Stud, Ball, .39d .31- 18	2
3	14464	Gas spring, 35lb, 8.0strk	1
4	1077073	Nut, Push, Bolt Retention, Stl, 5/16 Thrd	4
5	1025736	Latch	1
6	24199	Screw, Hex, M5 X 0.80 X 16, SS	2
7	19065	Washer, Flat, 0.19b 0.44d .05, Pl, 08	2
8	09739	Nut, Hex, Lock, M5 X 0.80, NI, SS	2
9	1200999	Angle, Latch	1
10	1203958	Handle, Latch	1
11	32520	Nut, Hex, Jam, .25- 20	2
12	1203946	Bracket Wldt, Latch	1
13	1020341	Screw, Hex, M8 X 1.25 X 20, SS, SEMS	2
14	80921	Bushing, Snap- In, 0.25b 0.31d 0.08th Nyl	2
15	1253493	Handle Wldt, Latch, Seat	1
16	01684	Washer, Flat, 0.27b 0.69d .05, SS	2
17	08085	Pin, Cotter, Hair, 0.31d .058 Wir	1
18	08712	Nut, Hex, Lock, M6 X 1.00, NI, SS	1
19	1034731	Screw, Hex, M6 X 1.00 X 16, SS, SEMS	1
20	1205764	Sleeve, P/M, 0.25b 0.38d 0.1l [430ss]	1
21	29570	Washer, Flat, 0.28b 1.00d .06, Stl	1
▽ 22	1201428	Seat, Dlx, W/ Armrests & Orange Seatbelt	1
▲ 23	1248442	Seatbelt, Orange, Retractable, Afrmkt	1
▲ 24	1048955	Switch, Seat, No [Delta 6440- 04]	1
25	1051052	Spacer, Rnd, .38b .88d .38l	4
26	1073048	Screw, Pan, Phl, .31- 18 X 1.50, G2	4
27	32983	Nut, Hex, Lock, .31- 18, NI	5
28	1017218	Washer, Flat, 0.32b 1.00d .12, SS	4
29	1077067	Track, N- Lkg, Seat, 12.5l, No Stud	1
30	1077071	Track, Locking, 12.5l, No Stud w/Handle	1
31	76955	Screw, Hex, .31- 18 X 1.00, G5	4

TENNANT COMPANY  
10400 Clean Street  
Eden Prairie, MN 55344- 2650